



NSET
Earthquake Safe Communities in Nepal



UNITED NATIONS
UNIVERSITY

International Conference on Enhancement of Urban Disaster Resilience

(under the UNU Grant for Global Sustainability Project)

GGs project in Lalitpur Metropolitan City



Chiribabu Maharjan
Mayor Lalitpur Metropolitan City



Content



- 1. Introduction of LMC**
- 2. Impact of the 2015 Gorakha Earthquake**
- 3. GGS Project team**
- 4. Overview of pilot wards (16 and 21 of LMC)**
- 5. GGS activities in LMC 16 and 21**
- 6. Lessons Learnt**
- 7. Future plans for DRM in Lalitpur**



Nepal



NSET
Earthquake Safe Communities in Nepal

148,197 Sq. Km Area
27 m Population (2011 census)
7 province,
77 District
6 Metropolitan City
11 Sub- metropolitan City
276 Municipality
460 Rural Municipalities

Province No. 7

Province No. 6

Province No. 4

Province No. 3

Province No. 1

Province No. 5

Province No. 2

Lalitpur Metropolitan City (LMC)



Lalitpur Metropolitan City



NSET
Earthquake Safe Communities in Nepal

36.12 sq. km. Area

29 Wards

70,256 Household

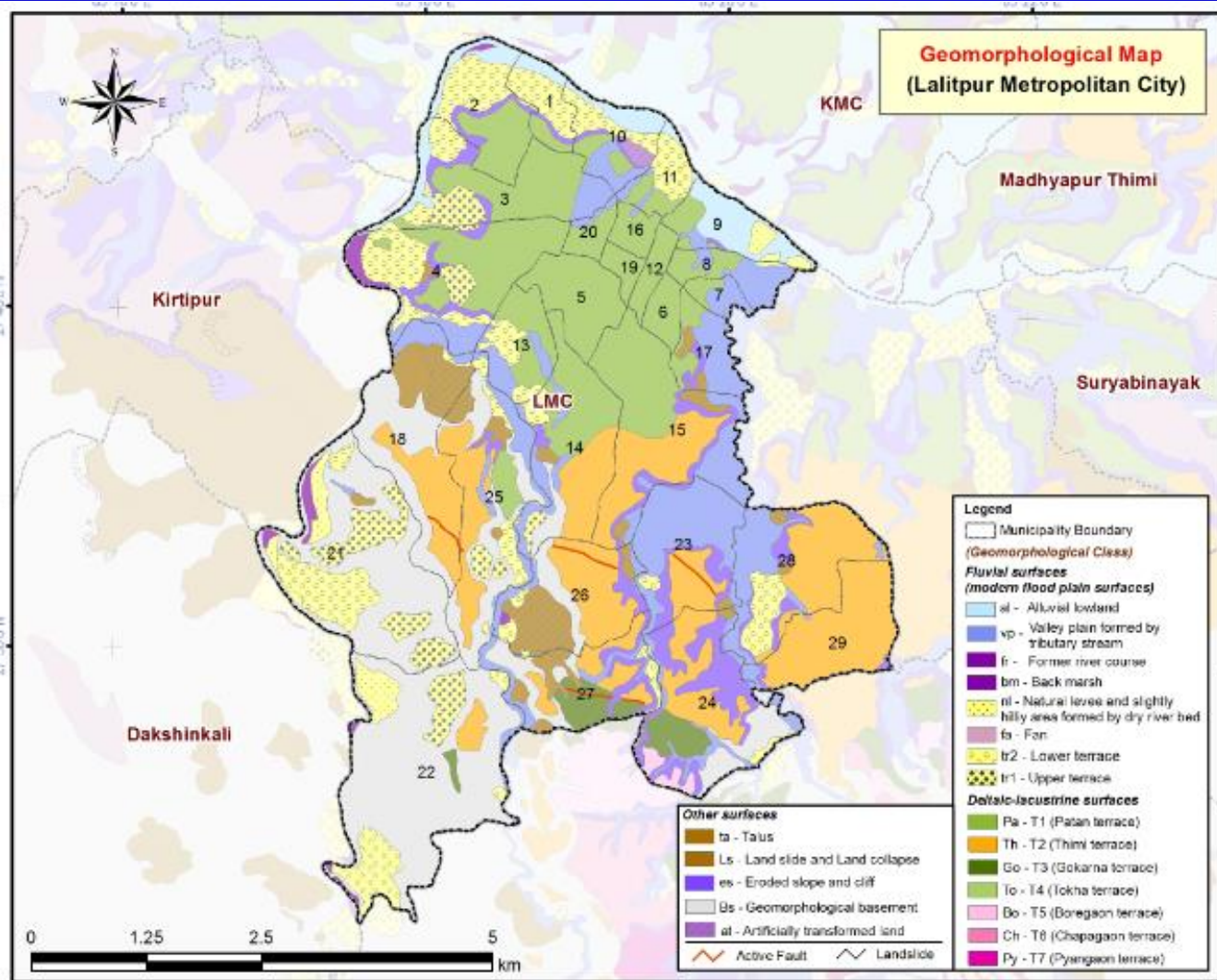
284,922 Population

138,998 Female

145,924 Male

Hazards

- Fire
- Earthquake
- Road Accidents
- Flood/landslide



DAMAGE DUE TO 2015 GORKHA EARTHQUAKES

S.N.	Description	Nepal	Kathmandu	Lalitpur	Bhaktapur
1	Population	26,620,809	1,744,240	468,132	304,651
2	Households		436,344	109,797	68,636
3	Total Death	8,897	1,226	180	333
4	Injured	22,309	7,952	3,051	2,101
5	Government house fully damaged	2,637	85	217	5
6	Government house partially damage	3,757	277	198	51
7	Private house fully damaged	602,257	43,502	17,444	18,900
8	Private house partially damaged	285,099	56,024	8,064	9,054



Effects of 2015 Gorakha Earthquake in LMC



Loss	LMC	LMC 16	LMC 21
Collapsed Buildings	4199	283	837
Non Functional Buildings	3274	286	105
Partially Damaged Functional	2818	593	114
Damage Heritage Monuments	195	6	10
Minor Damage	3788	129	-
Casualties	66	No	9
Injuries	218	3	32
Directly Affected Population	75,621	7351	3997



LMC Ward 16



NSET
Earthquake Safe Communities in Nepal

- **Area = 0.22 Sq. Km.**
- **House hold = 2058**
- **Population = 10,139**
- **Hazards : Fire, Earthquake , Road Accidents, Drainage**
- **DRR Initiatives : Youth in Disaster, Drill, Fire Control, Storage of Emergency tools,**
- **GGIS impact in DRR initiatives Scenario based action Plan, Awareness, Community engagement.**





LMC Ward 21



NSET
Earthquake Safe Communities in Nepal

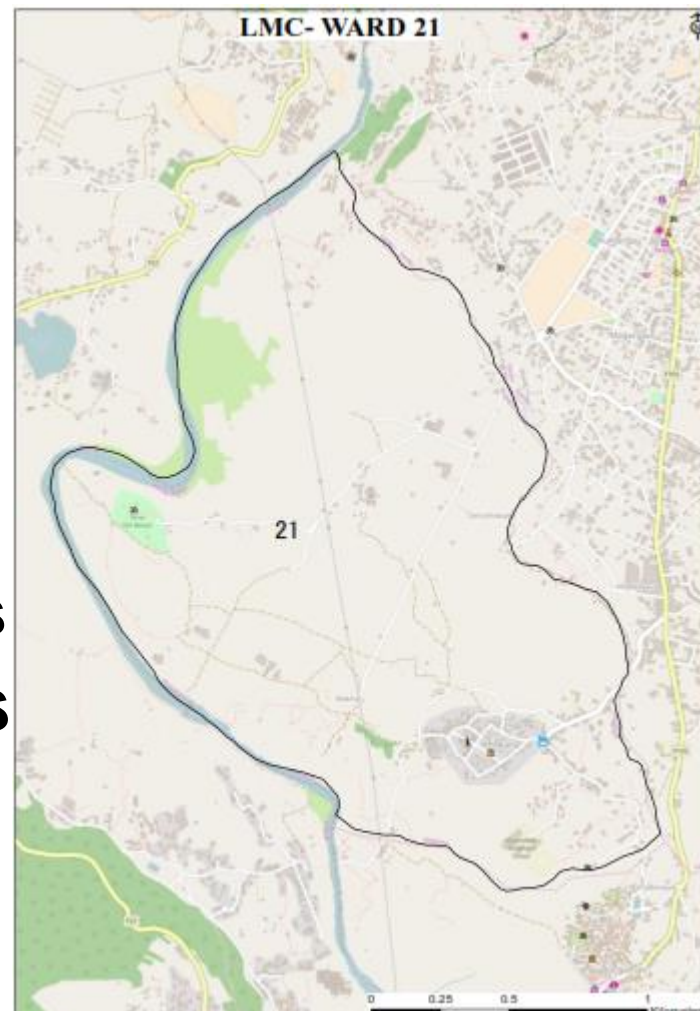
- **Area= 3.20 Sq. Km.**
- **Population = 4,927**
- **House Hold = 1056**
- **Hazards :Fire, Earthquake ,**
- **Road Accidents, Flood/landslides**

DRR Initiatives: Drill, Fire

Control, Storage of Emergency tools

- **GGIS impact in DRR initiatives**

**: Scenario based action Plan,
Awareness, Community
engagement**





GGG Activities in LMC



NSET
Earthquake Safe Communities in Nepal

- **Risk assessments**
- **Scenario Development**
- **Action planning**
- **Action plan implementation**
- **DRM activities**



Lessons Learnt



- **Activities based on community requirements.**
- **Scenario Preparation**
- **Scenario based action plan .**



Municipal Level DRR and Preparedness Plan



NSET
Earthquake Safe Communities in Nepal

- ❖ **Municipal level Plans and Policies.**
- ❖ **Acts, By-laws, laws.**
- ❖ **Implementation Strategy.**



Thank you